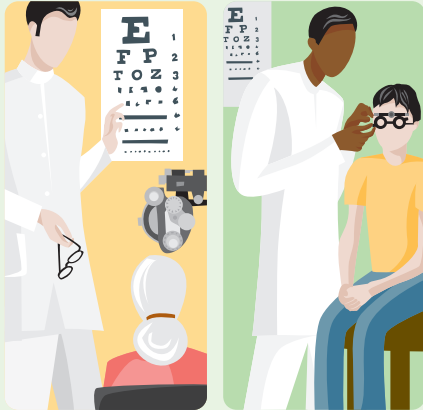


## Vision Discount Program

*This vision discount program is available free to all Northeast Delta Dental subscribers and their dependents.*



### VISION WELLNESS

Regular eye examinations play a crucial role in ensuring healthy vision and overall health.

- An eye examination can not only detect vision problems, but also can detect the early stages of serious health problems such as diabetes and hypertension.
- One in four children has an undetected vision problem that can interfere with learning, according to the Vision Council of America.
- Undetected eye diseases can lead to worsening eyesight and in some cases irreversible vision loss.

## Great Savings— Up to 35% off eyewear

Choose from any available frame including quality name-brand products such as Brooks Brothers®, Ann Klein®, Vogue® and more at provider locations.

With EyeMed Vision Care, Northeast Delta Dental members have access to **over 46,000 vision care providers nationwide at 22,000 locations** including optometrists, ophthalmologists, opticians, and the nation's leading optical retailers:

LENSCRAFTERS®

PEARLE VISION®

Target OPTICAL

Sears  
Optical

PRIVATE PRACTITIONERS

**It's easy!** To request your discount, simply present your Delta Dental member ID card or this flyer when you arrive at the provider office or location. Your EyeMed provider will take care of the rest!

To learn more about the EyeMed Vision Care Discount Plan, please visit our Web site at [www.nedelta.com](http://www.nedelta.com).

## Program Description

### SAVE up to 35% OFF Frames, Lenses and Lens Options

Please take a few minutes to review the description of your Vision Discount Plan in detail. Remember, you can use this program as often as you wish—there is no limit to your savings!

Vision Care Services	Member Pays
<b>Exam with Dilation as Necessary:</b>	\$5 off comprehensive exam \$10 off contact lens exam
<b>Complete Pair Glasses Purchase:</b> <ul style="list-style-type: none"> <li>• The following Frame, Lenses, and Lens Options discounts &amp; fees apply only if a complete pair is purchased in same transaction.</li> <li>• Items purchased separately will be discounted 20% off the retail price.</li> </ul>	
<b>Standard Plastic Lenses including Standard Scratch:</b> Single Vision Bifocal Trifocal	\$75 \$95 \$125
<b>Frames:</b> Any frame available at provider location	30% off retail price
<b>Lens Options:</b> Standard UV Standard Tint Standard Polycarbonate Standard Anti-reflective Coating Standard Progressive (add-on to bifocal)	\$15 \$15 \$40 \$45 \$70
<b>Contact Lenses:            (Discount applied to materials only)</b> Conventional	15% off retail price
<b>Laser Vision Correction:</b> LASIK or PRK	15% off retail price - or - 5% off promotional price

**Frequency**

All Services

Unlimited

THIS IS NOT INSURANCE

**Replacement Contact Lens By Mail Service:**

Members may receive replacement contact lenses at competitive prices via the Internet and have them mailed directly to their home. Simply visit [www.eyemedcontacts.com](http://www.eyemedcontacts.com) to order.

Members will receive a 20% discount on those items purchased at participating providers that are not specifically covered by this Discount design. The 20% discount may not be combined with any other discounts or promotional offers, and the discount does not apply to EyeMed Provider's professional services, or contact lenses. Retail prices may vary by location. Please note, all dependents are eligible for discounts with all discount plans.

\*\*LASIK and PRK correction procedures are provided by the U.S. Laser Network, owned by LCA-Vision. Members must first call 1-877-552-7376 for the nearest laser facility and to receive authorization for the discount.